



## → COMPRESSION SYSTEM

The Unique Hawke Compression System is used in rectangular frames to compress and seal the installation of cables/pipes within HF modules. It is composed by:

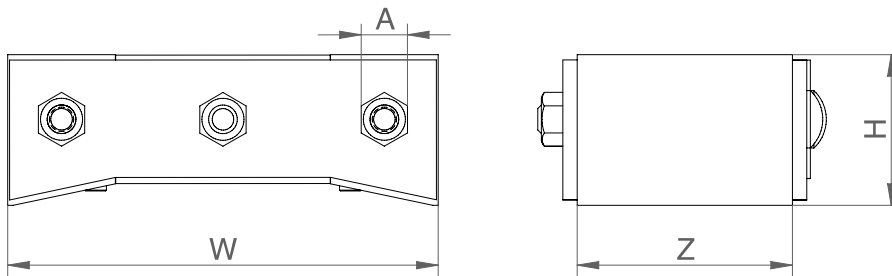
- **Endpacker:** The final element of the frame installation, this is inserted above the compression plate. The tightening of the bolts and the steel insert pins provides pressure to the system and ensures correct sealing.
- **Compression plate:** Placed on top of the last row of blocks, this plate distributes the pressure from the endpacker to ensure the correct compression is applied to the system.



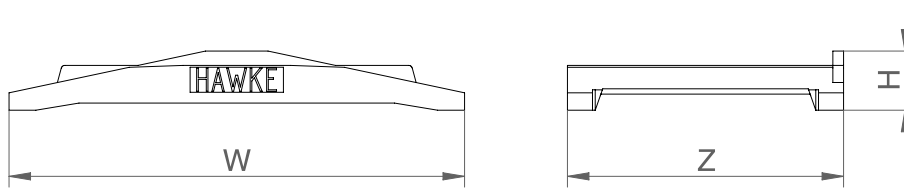
### CHARACTERISTICS

- ◆ Available in 120 and 60mm width (for 120 and 60 mm frames).
- ◆ Designed to be installed in all rectangular apertures.
- ◆ Materials: Mild Steel, Stainless Steel.

#### ◆ → Endpacker 1642B



#### ◆ → Compression plate 1642A



DESCRIPTION		External dimensions				A	Weight (kg)	
		Qty	W [mm]	H [mm]	Z [mm]		Mild steel	Stainless steel
Compression System/1642 120 mm	Endpacker/1642B 120	1	120	42	60	13	0,8	0,8
	Compression Plate/1642A 120	1	127	17	77	-	0,4	0,4
Compression System/1642 60 mm	Endpacker/1642B 60	1	60	42	60	13	0,4	0,4
	Compression Plate/1642A 60	1	64	17	77	-	0,2	0,2
Compression System/962 180 mm	Endpacker/962B 180	1	180	42	60	13	1,2	1,2
	Compression Plate/962A 180	1	187	19	81	-	0,6	0,6
Compression System/963 240 mm	Endpacker/963B 240	1	240	42	60	13	1,5	1,5
	Compression Plate/963A 240	1	247	19	81	-	0,9	0,9
Compression System/964 360 mm	Endpacker/964B 360	1	360	42	60	13	2,3	2,3
	Compression Plate/964A 360	1	267	19	81	-	1,3	1,3

\* For separate parts acquisition, contact sales department