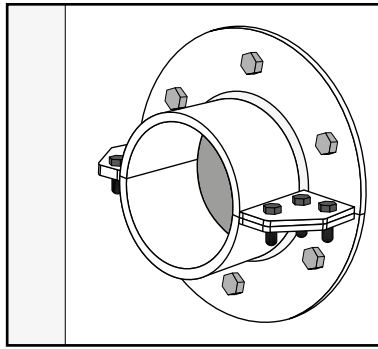
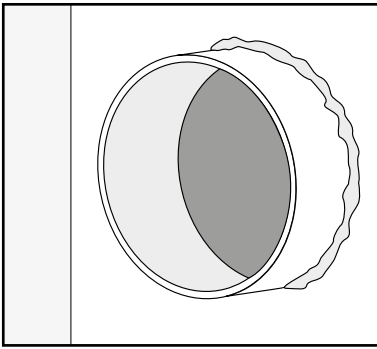
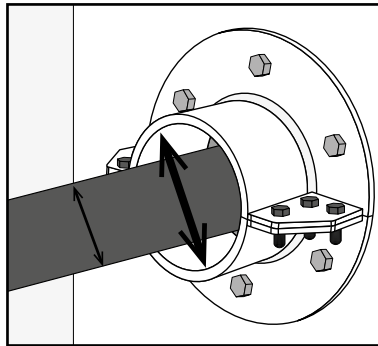


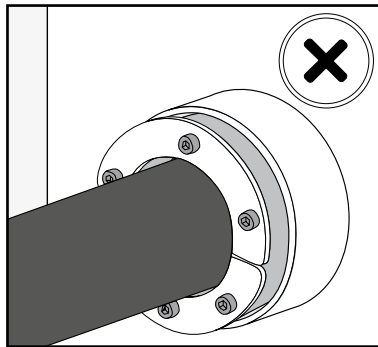
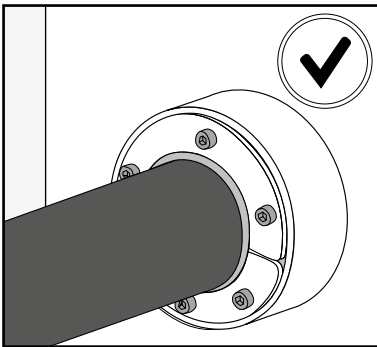
→ **ROUND HRST STANDARD** installation and inspection checks guidelines:



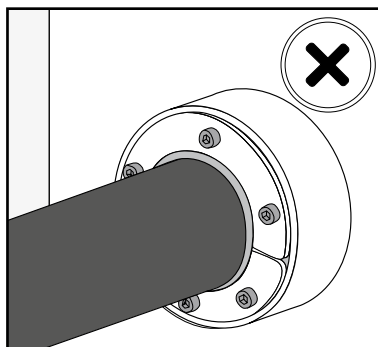
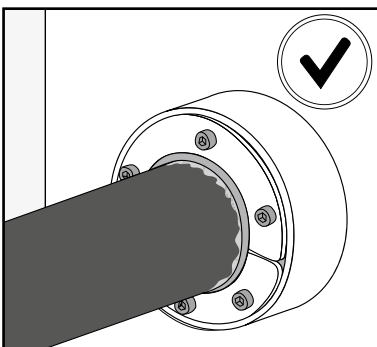
Check that Hawke Sleeve has been used in the installation, that it has been properly installed (welded/bolted) and that it has not mechanical or corrosion damage.



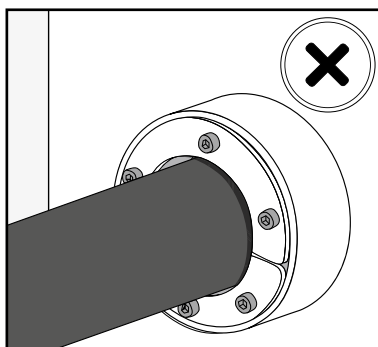
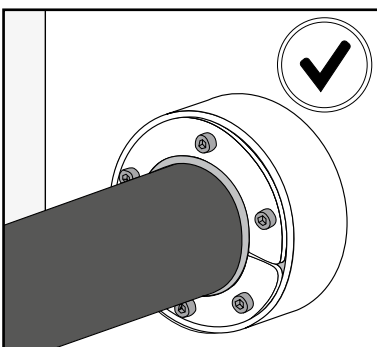
Check the inside diameter of the sleeve and the outside diameter of the cable/pipe to verify that it is within the range of selected HRST.



Check that the HRST is completely inserted in the Sleeve/Aperture.



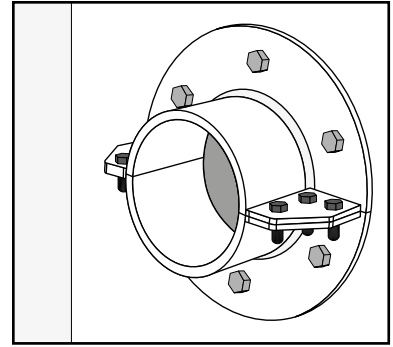
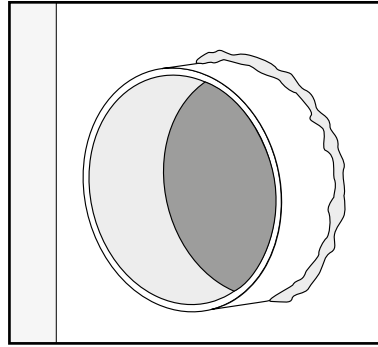
Check that Hawke Lubricant has been used during the installation.



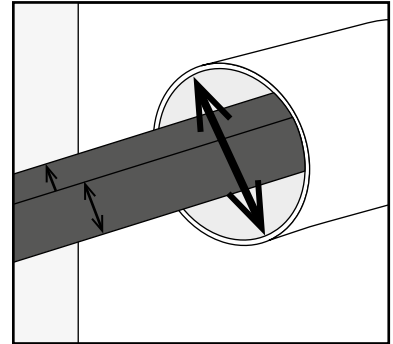
Check that all the bolts has been tightened similarly and do not exist gaps between the cable/pipe and the HRST.

→ **ROUND HRST MULTIHOLE** installation and inspection checks guidelines:

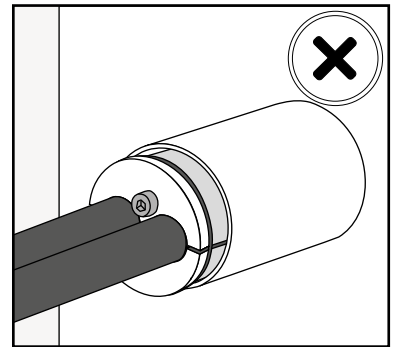
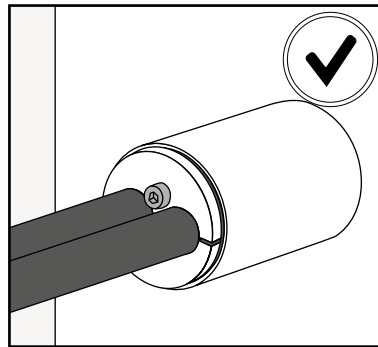
Check that Hawke Sleeve has been used in the installation, that it has been properly installed (welded/bolted) and that it has not mechanical or corrosion damage.



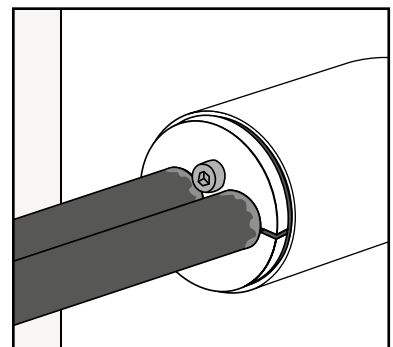
Check the inside diameter of the sleeve and the outside diameter of the cable/pipe to verify that it is within the range of selected HRST.



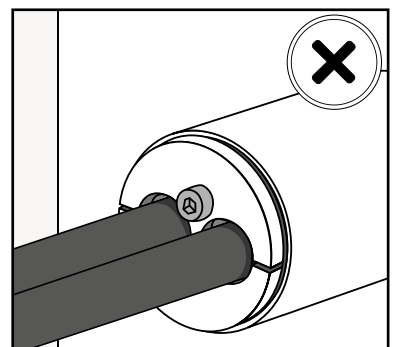
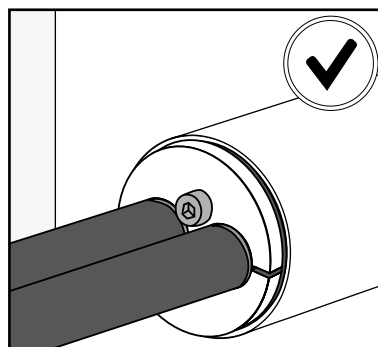
Check that the HRST is completely inserted in the Sleeve/Aperture.

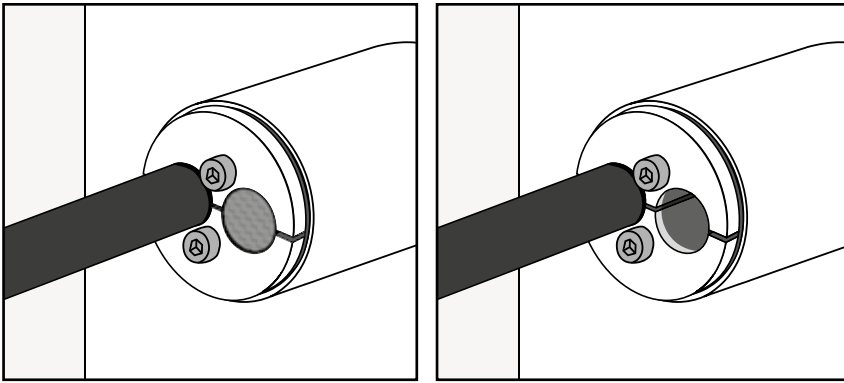


Check that Hawke Lubricant has been used during the installation.



Check that all the bolts has been tightened similarly and do not exist gaps between the cable/pipe and the HRST.





Check that every not occupied HRST holes are plugged with Hawke HRST plugs.

 Notes

Leave the system at least 24 hour before apply pressure.