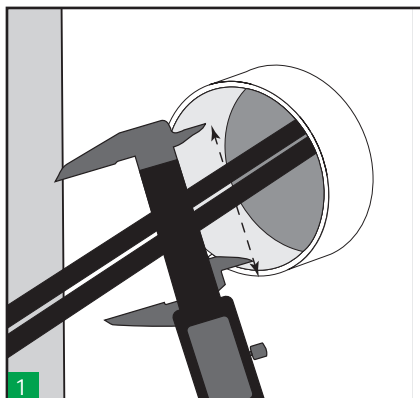
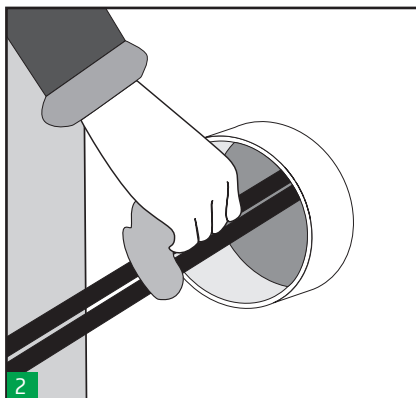


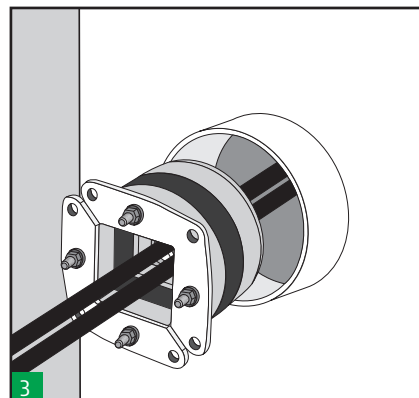
→ **HRT0 / HRT ROUND SYSTEM** standard installation guide:



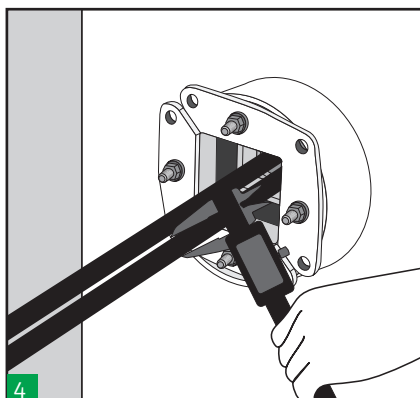
1 Measure the inside of pipe/aperture to ensure that it is within the tolerance of the round transit frame to be used.



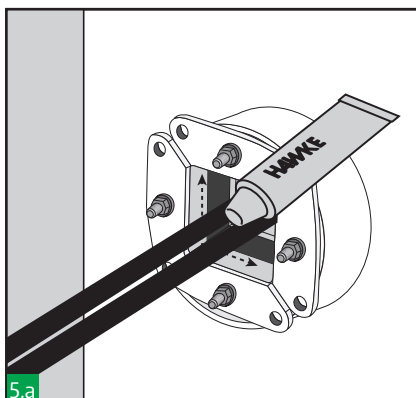
2 Make sure the frame is clean



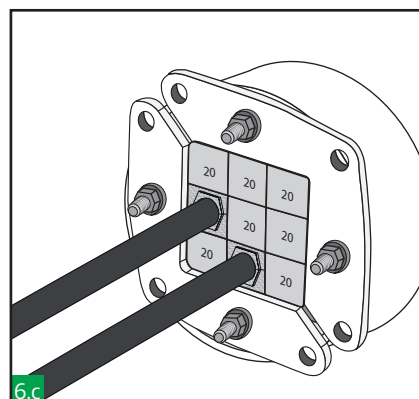
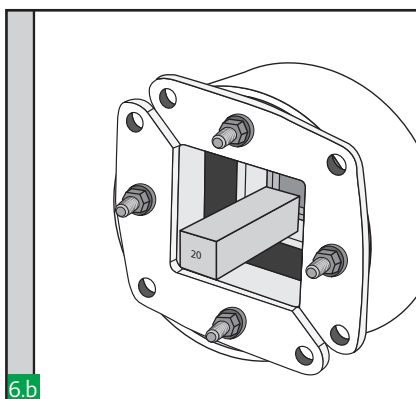
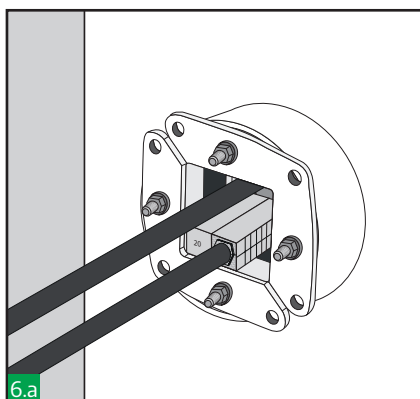
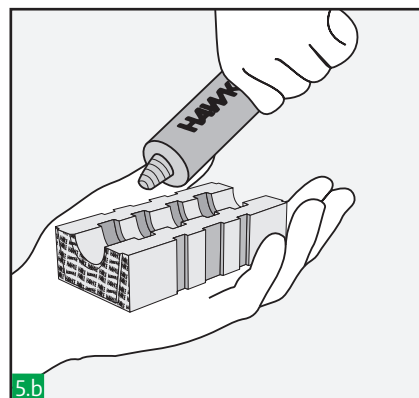
3 Insert the round transit frame completely in the sleeve/aperture around the cables. No lubricant should be applied to the aperture or outside of the frame. If close version of the Round Transit(HRT) is used, it should be installed previously to pull the cables/ pipes through the sleeve or aperture.



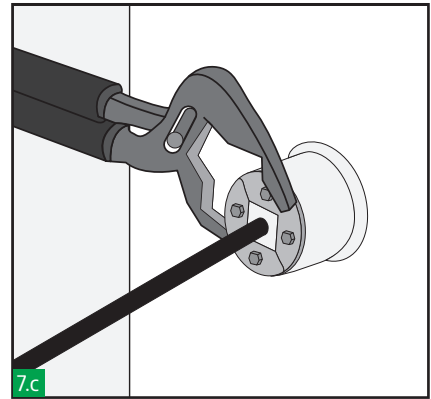
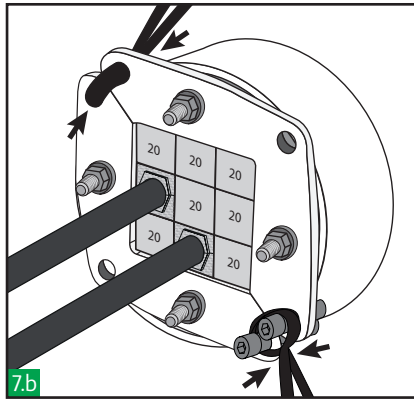
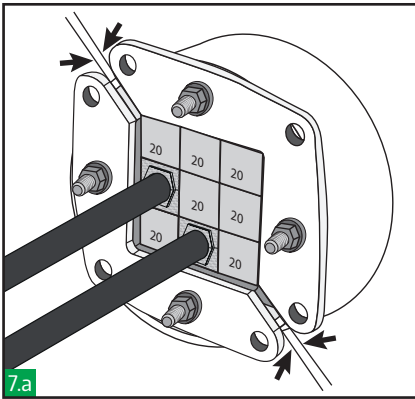
4 Take measures of the cables diameters and select the appropriate Hawke Tolerant blocks. Colour code will help you to select the correct ones.



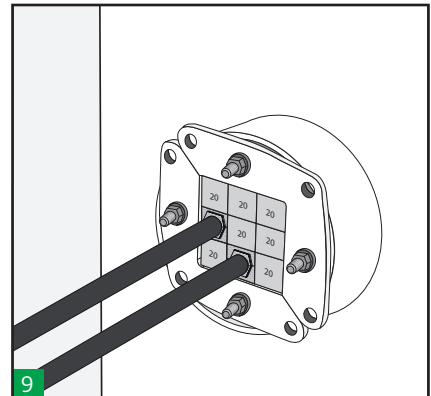
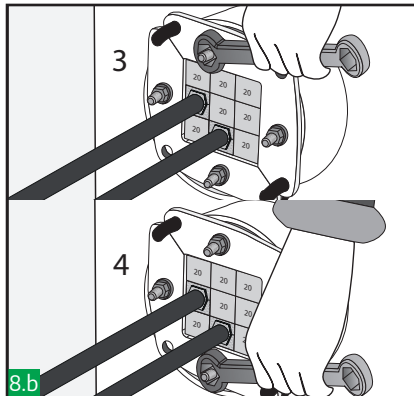
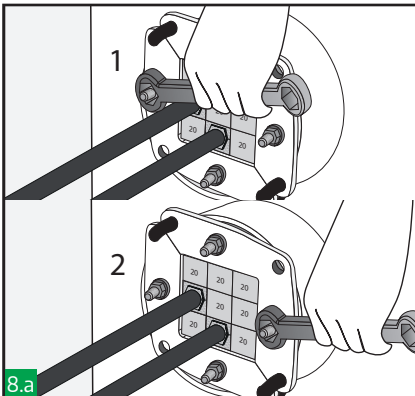
Lubricate the inside of the HRT0 and all the insert and blank blocks using Hawke lubricant. Open the two front plates. (HRT030, HRT040 & HRT050 front plates are fixed)



Begin packing the transit frame starting at the bottom and finishing at the top. Ensure that the blocks are pushed firmly against the rear retaining lip. Verify that the complete sealing area of this frame size (see table) is filled with blocks.

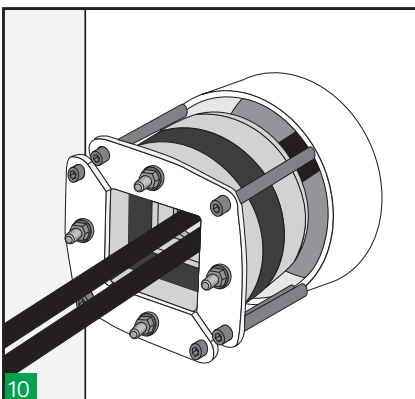


Slide the two front plates together and keep it fixed. Ensure all the blocks are located inside the front retaining lip.
For an easier installation, cable ties, bolts or adjustable pliers can be used to close this plates.



Tighten the nuts approximately 2mm each time following alternate tightening sequence, applying equal pressure to both plates. A minimum of 10 mm of thread should protrude on each bolt. Use a ratchet spanner for an easier installation.

Make a visual inspection of the transit. Hawke's unique colour coding system enables the installation to be visually inspected after completion and ensures correct matching of the block halves.

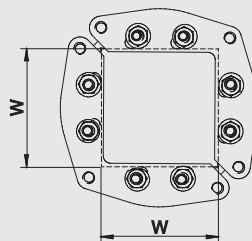


Extraction is achieved by releasing the compression, i.e. by reversing steps 7 and 8 and screwing M8 bolts (not supplied) into the threaded holes at each corner of the front plates. These releases the assembly from the aperture and allows the system to be disassembled.

Notes

Leave the system at least 24 hours before applying pressure. For disassembly see disassembly instructions.

Sealing Area



TYPE	SEALING AREA (mm)
HRT0-30	15x15
HRT0-40	20x20
HRT0-50	30x30
HRT0-70	40x40
HRT0-100	60x60
HRT0-125	80x80
HRT0-150	90x90
HRT0-200	120x120

