

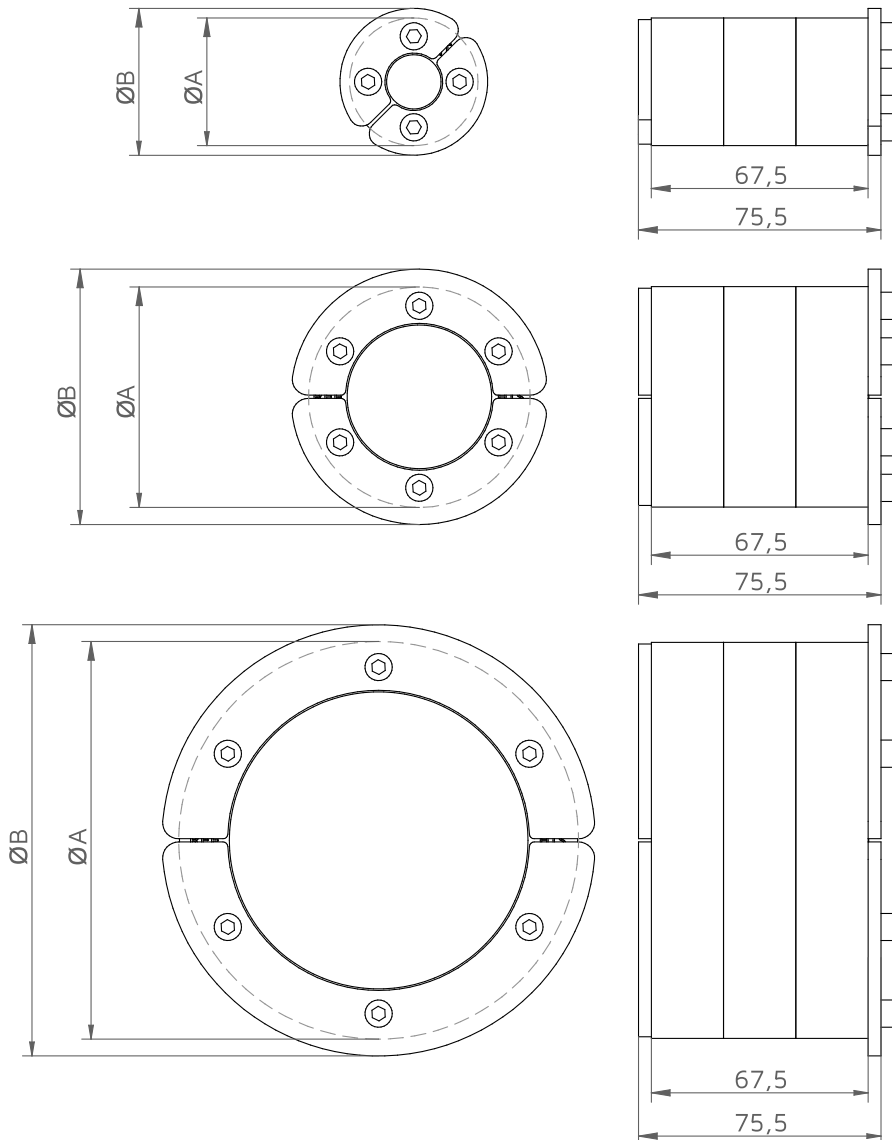
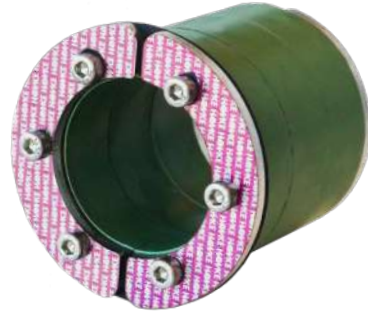
# HRST Family

Hawke HRST is a round sealing solution for a single cable/pipe passing through a wall or bulkhead/deck

Each size of HRST frame can seal a large range of diameters without any onsite modifications.

## CHARACTERISTICS

- ◆ Available to seal services from 4mm up to 170mm of external diameter (standard version).
- ◆ Tolerant up to 7 mm.
- ◆ Designed to be installed using Hawke Sleeves (welded, bolted or casted).
- ◆ Manufactured in intumescent elastomer polymer with stainless steel front and back plates. Each HRST frame has a gasket to prevent galvanic corrosion when installed within a mild steel sleeve.
- ◆ HRST is always supplied as an open frame. This enables the frame to be installed after cable/pipe installation.
- ◆ No extra tools are required for its installation.



# HRST Family

| DESCRIPTION  | SLEEVE SIZE NEEDED | SEALING FROM (mm) | SEALING TO (mm) | A (mm) | B (mm) | WEIGHT (kg) | COLOUR |
|--------------|--------------------|-------------------|-----------------|--------|--------|-------------|--------|
| HRST-30/4    | 30                 | 4                 | 10              | 32     | 36     | 0,16        | White  |
| HRST-30/7    | 30                 | 7                 | 14              | 32     | 36     | 0,15        | Red    |
| HRST-30/10   | 30                 | 10                | 17              | 32     | 36     | 0,14        | Blue   |
| HRST-40/4    | 40                 | 4                 | 10              | 40     | 46     | 0,24        | Purple |
| HRST-40/7    | 40                 | 7                 | 14              | 40     | 46     | 0,23        | yellow |
| HRST-40/10   | 40                 | 10                | 17              | 40     | 46     | 0,21        | Green  |
| HRST-40/17   | 40                 | 17                | 24              | 40     | 46     | 0,18        | Pink   |
| HRST-50/4    | 50                 | 4                 | 10              | 50     | 56     | 0,35        | Red    |
| HRST-50/10   | 50                 | 10                | 17              | 50     | 56     | 0,33        | White  |
| HRST-50/17   | 50                 | 17                | 24              | 50     | 56     | 0,29        | Blue   |
| HRST-50/24   | 50                 | 24                | 30              | 50     | 56     | 0,25        | Orange |
| HRST-70/26   | 70                 | 26                | 33              | 69     | 80     | 0,56        | Purple |
| HRST-70/33   | 70                 | 33                | 39              | 69     | 80     | 0,50        | Yellow |
| HRST-70/39   | 70                 | 39                | 45              | 69     | 80     | 0,44        | Green  |
| HRST-70/45   | 70                 | 45                | 50              | 69     | 80     | 0,38        | Pink   |
| HRST-100/48  | 100                | 48                | 55              | 99     | 110    | 0,96        | Red    |
| HRST-100/55  | 100                | 55                | 61              | 99     | 110    | 0,87        | White  |
| HRST-100/61  | 100                | 61                | 66              | 99     | 110    | 0,79        | Blue   |
| HRST-100/66  | 100                | 66                | 71              | 99     | 110    | 0,71        | Orange |
| HRST-125/64  | 125                | 64                | 71              | 124    | 135    | 1,42        | Purple |
| HRST-125/71  | 125                | 71                | 79              | 124    | 135    | 1,27        | Yellow |
| HRST-125/79  | 125                | 79                | 86              | 124    | 135    | 1,12        | Green  |
| HRST-125/86  | 125                | 86                | 93              | 124    | 135    | 0,96        | Pink   |
| HRST-125/93  | 125                | 93                | 98              | 124    | 135    | 0,84        | Orange |
| HRST-150/93  | 150                | 93                | 102             | 149    | 160    | 1,79        | Red    |
| HRST-150/102 | 150                | 102               | 108             | 149    | 160    | 1,63        | White  |
| HRST-150/108 | 150                | 108               | 115             | 149    | 160    | 1,43        | Blue   |
| HRST-150/115 | 150                | 115               | 120             | 149    | 160    | 1,28        | Orange |
| HRST-175/118 | 175                | 118               | 125             | 174    | 185    | 2,16        | Purple |
| HRST-175/125 | 175                | 125               | 132             | 174    | 185    | 1,93        | Yellow |
| HRST-175/132 | 175                | 132               | 138             | 174    | 185    | 1,72        | Green  |
| HRST-175/138 | 175                | 138               | 145             | 174    | 185    | 1,47        | Pink   |
| HRST-200/136 | 200                | 136               | 143             | 199    | 210    | 2,73        | Red    |
| HRST-200/143 | 200                | 143               | 150             | 199    | 210    | 2,48        | White  |
| HRST-200/150 | 200                | 150               | 157             | 199    | 210    | 2,20        | Blue   |
| HRST-200/157 | 200                | 157               | 164             | 199    | 210    | 1,92        | Orange |
| HRST-200/164 | 200                | 164               | 170             | 199    | 210    | 1,67        | Yellow |

\*All dimensions are nominal values

## Installation references

|                        | page |
|------------------------|------|
| See accessories        | 76   |
| See installation guide | 122  |
| See inspection check   | 162  |