

 **HAWKE**  
Transit System  
H-DM

**Hawke**  
Transit System

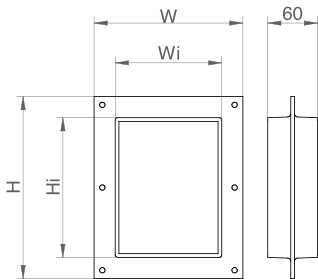
# **CABINET** SEALS

# H-DM Frame

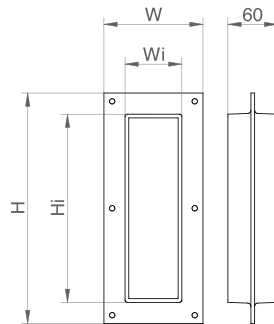
Hawke H-DM is a low weight cable sealing solution, designed for the sealing of electrical panel boards and cabinets against external conditions.

## CHARACTERISTICS

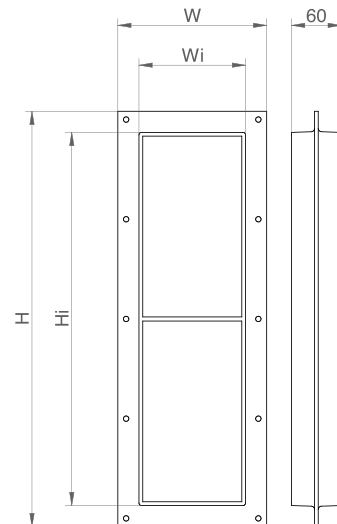
- ◆ Available in three standard 120 mm width (internal) sizes (4, 6.3 and 6+6) and in two standard 60mm width (internal) sizes (1 and 5).
- ◆ Designed to be bolted inside or outside the electrical panel board/cabinet.
- ◆ Materials: Aluminium.
- ◆ IP66 and IP67 protection.
- ◆ To be sealed with Hawke DM series: DM tolerant and blank sealing modules, CSDM compression system and stayplates.



H-DM 4



H-DM 5



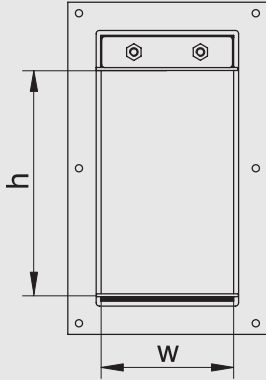
H-DM 6+6

DESCRIPTION	EXTERNAL DIMENSIONS				Weight (kg)
	W (mm)	H (mm)	Wi (mm)	Hi (mm)	
H-DM 1	120	160	69	109	0,4
H-DM 4	180	220	129	169	0,7
H-DM 5	120	278	69	227	0,7
H-DM 6.3	180	300	129	249	0,9
H-DM 6+6	180	501	129	450	1,4

\*All dimensions are nominal values

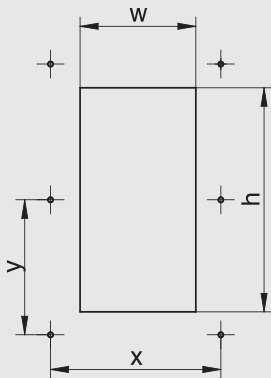
# H-DM Frame

## Sealing Area



DESCRIPTION	SEALING AREA (mm)
H-DM 1	60x60
H-DM 4	120x120
H-DM 5	60x180
H-DM 6.3	120x200
H-DM 6+6	2x (120x180)

## Hole dimension



DESCRIPTION	HOLE DIMENSIONS		BOLTS POSITION		
	w (mm)	h (mm)	Φ (mm)	x (mm)	y (mm)
H-DM 1	77	117	6	100	140
H-DM 4	137	177	6	160	100
H-DM 5	77	235	6	100	126
H-DM 6.3	137	257	6	160	140
H-DM 6+6	137	458	6	160	120

\*All dimensions are nominal values

## Installation references

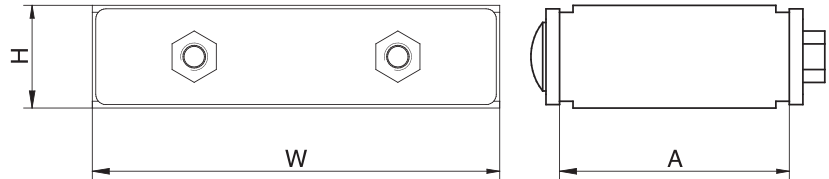
	page
See accessories	76
See installation guide	126

# CSDM Compression Kit



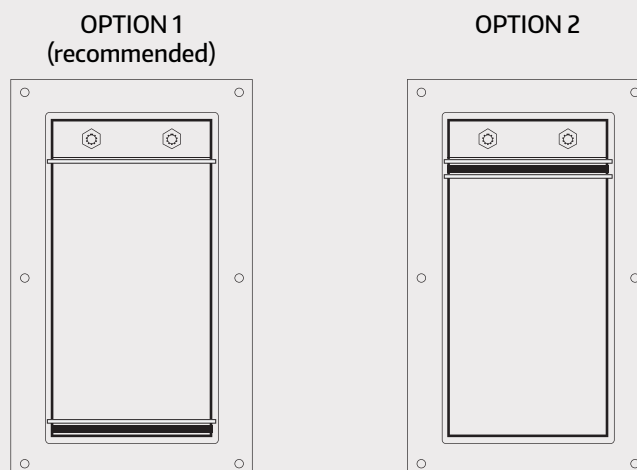
Hawke CSDM Compression system is used in H-DM frames to compress and seal the installation of cables and DM modules. It includes the endpacker unit, 5mm filler strip and two stayplates. The 5mm filler strip can be installed as either the top or bottom row of blocks within a H-DM aperture.

The extra 5mm strip is recommended to be placed on the bottom row of the frame, along with one of the stayplates.



	DESCRIPTION	Qty	W [mm]	H [mm]	A [mm]	Weight (kg)
CSDM – 120/S Compression Kit	DM - Endpacker	1	120	30	68	0,6
	DM50	1	120	5	60	0,02
	Stayplate	2	-	-	-	-
CSDM – 60/S Compression Kit	DM - Endpacker 60mm	1	60	30	68	0,3
	DM50 60mm	1	60	5	60	0,01
	Stayplate 60mm	2	-	-	-	-

## Installation Options



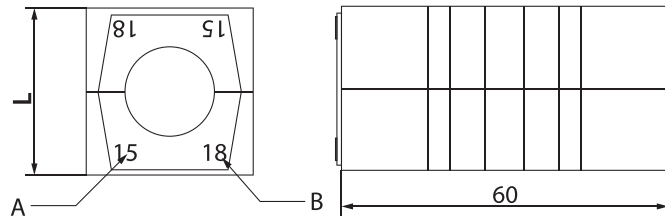
- ◆ **Option 1 (recommended):** Endpacker and stayplate located in upper end of the frame. Dm50 compensation module located on the bottom end, with a stayplate over it (never between module and frame).
- ◆ **Option 2:** Endpacker, DM50 compensation module and 2 stayplates located in the upper end of the frame. Each stayplate should be located in between the rubber components (endpacker-DM50 and DM50-inferior modules).

# DM Tolerant blocks



Hawke DM tolerant blocks are designed to accommodate different cable sizes passing through the frame.

Like all Hawke modules, its degree of flexibility allows cable diameter variances and its colour-coding feature allows easy installation and onsite inspection.

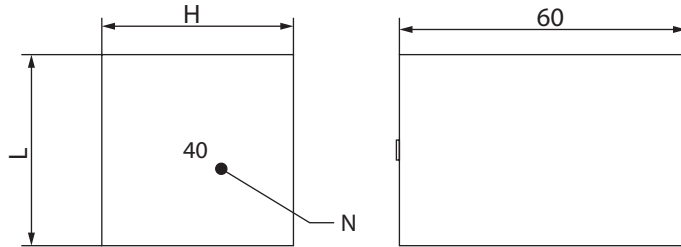


DESCRIPTION	L (mm)	CABLES DIAMETER		WEIGHT (kg)	COLOUR
		LABEL A	LABEL B		
		MINIMUM (mm)	MAXIMUM (mm)		
DM 153	15	3	5	0,01	Red
DM 155	15	5	7	0,01	White
DM 157	15	7	9	0,01	Blue
DM 203	20	3	6	0,02	Green
DM 206	20	6	9	0,02	Pink
DM 209	20	9	12	0,02	Brown
DM 2011	20	11	14	0,02	Yellow
DM 2013	20	13	16	0,02	Golden
DM 3012	30	12	15	0,04	Red
DM 3015	30	15	18	0,04	White
DM 3018	30	18	21	0,04	Blue
DM 3021	30	21	24	0,03	Orange
DM 4012	40	12	15	0,12	Green
DM 4015	40	15	18	0,09	Pink
DM 4022	40	22	25	0,08	Red
DM 4025	40	25	28	0,07	White
DM 4028	40	28	31	0,06	Blue
DM 4031	40	31	34	0,05	Orange
DM 6031	60	31	34	0,17	Red
DM 6034	60	34	37	0,17	White
DM 6037	60	37	40	0,16	Blue
DM 6040	60	40	43	0,15	Orange
DM 6043	60	43	46	0,14	Purple
DM 6046	60	46	49	0,13	Yellow
DM 6049	60	49	52	0,11	Green
DM 6052	60	52	54	0,09	Pink

# DM

Blank blocks

Hawke DM blank modules are designed to fill spaces within the frame which are not required for services, thus allowing spare capacity for future requirements.



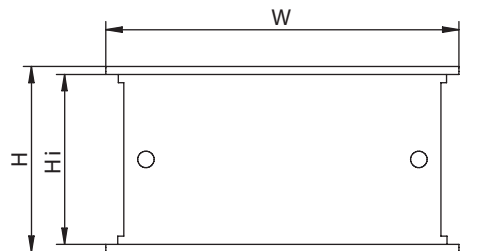
DESCRIPTION	L (mm)	H (mm)	LABEL (N)	WEIGHT (kg)	COLOUR
DM 150	15	15	15	0,01	Black
DM 200	20	20	20	0,02	
DM 300	30	30	30	0,06	
DM 400	40	40	40	0,11	
DM 600	60	60	60	0,22	
DM 50	5	120	-	0,02	
DM 100	10	120	-	0,08	

# STAYPLATES

Stayplates ensure the blocks in a Hawke rectangular system (tolerant and blank ones) are fixed in position after compression.

A stayplate should be placed above each complete row of insert/filler blocks, also one stayplate should be installed below the HDM endpacker (already included in CSDM compression kit).

- ◆ Available in AISI 304 stainless steel. AISI 316 and other materials under request.



DESCRIPTION	W (mm)	H (mm)	Hi (mm)
Stayplate 931 60mm	68	68	62
Stayplate 931 120mm	128	68	62