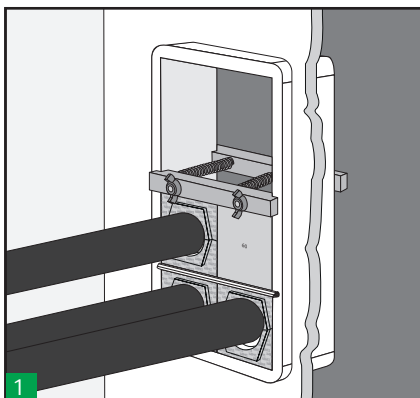
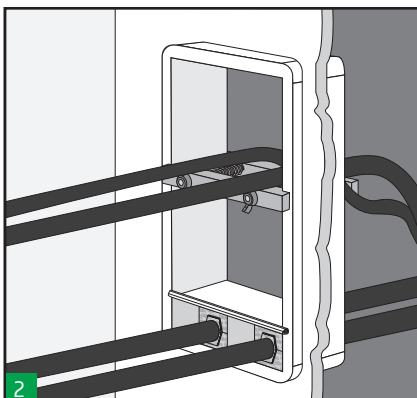


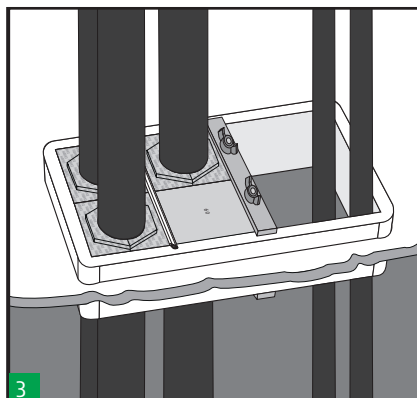
→ **CLAMP TOOL** Use guide:



Clamp Tool can be used to fix blocks in their place when the transit installation is not completely finished.



Clamp tool can be used to fix cables on the top part of the penetration allowing an easier installation of blocks.



Likewise, with this tool you must achieve greater comfort in a horizontal transit. Keeping blocks in position avoiding falling blocks.