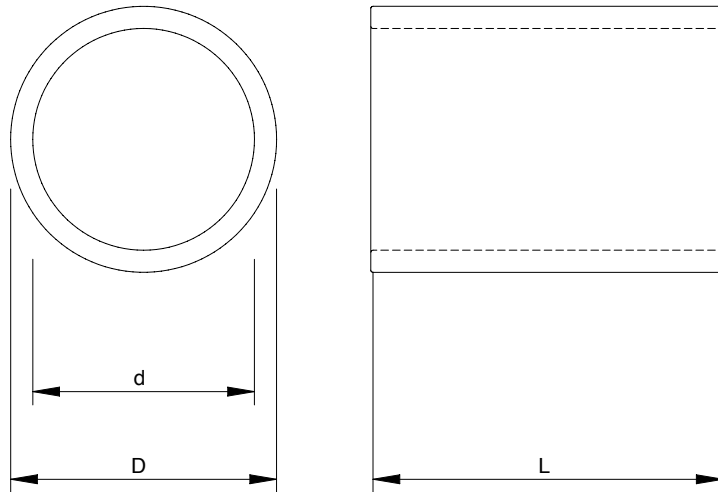


C Marine Sleeve

Sleeve without flange for Hawke Round transits.

CHARACTERISTICS

- ◆ Designed to be welded.
- ◆ Materials: Mild Steel, Stainless Steel and Aluminium
- ◆ To be sealed with standard or EMC HRT/HRTO and HRST.



Mild Steel

DESCRIPTION	D (mm)	d (mm)	L (mm)	Weight (kg)
MSC -30 L=80	34	42	80	0,3
MSC -40 L=80	40	50	80	0,4
MSC -50 L=80	50	60	80	0,5
MSC -70 L=80	70	80	80	0,7
MSC -100 L=80	100	110	80	1,0
MSC -125 L=80	125	140	80	2,0
MSC -150 L=80	150	171	80	3,3
MSC -175 L=80	175	193,7	80	3,4
MSC -200 L=80	200	220	80	4,1

*All dimensions are nominal values

C Marine Sleeve

Stainless Steel

DESCRIPTION	D (mm)	d (mm)	L (mm)	Weight (kg)
SS C -30 L=80	33	42	80	0,3
SS C -40 L=80	40	50	80	0,4
SS C -50 L=80	50	60,3	80	0,6
SS C -70 L=80	70	88,9	80	1,5
SS C -100 L=80	100	114,3	80	1,5
SS C -125 L=80	125	141,3	80	2,2
SS C -150 L=80	150	168,3	80	2,9
SS C -175 L=80	175	-	80	-
SS C -200 L=80	200	220	80	4,2

*All dimensions are nominal values

Aluminium

DESCRIPTION	D (mm)	d (mm)	L (mm)	Weight (kg)
AL C -30 L=80	33	45	80	0,2
AL C -40 L=80	40	50	80	0,2
AL C -50 L=80	50	60	80	0,2
AL C -70 L=80	70	80	80	0,3
AL C -100 L=80	100	110	80	0,4
AL C -125 L=80	125	135	80	0,4
AL C -150 L=80	150	170	80	1,1
AL C -175 L=80	175	190	80	0,9
AL C -200 L=80	200	220	80	1,4

*All dimensions are nominal values

Installation references

See assembly parts	66
See round frame HRTO	50
See round frame HRST	52
See accessories	76
See installation guide	116
See welding instructions	152
See inspection check	160