

H-DM Frame

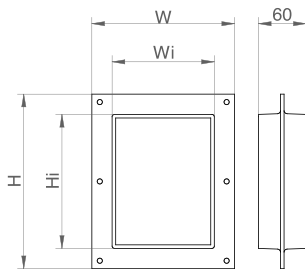
Hawke H-DM is a low weight cable sealing solution, designed for the sealing of electrical panel boards and cabinets against external conditions.

CHARACTERISTICS

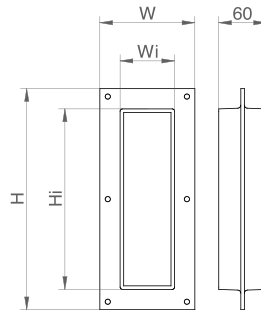
- ◆ Available in three standard 120 mm width (internal) sizes (4, 6.3 and 6+6) and in two standard 60mm width (internal) sizes (1 and 5).
- ◆ Designed to be bolted inside or outside the electrical panel board/cabinet.
- ◆ Materials: Aluminium.
- ◆ IP66 and IP67 protection.
- ◆ To be sealed with Hawke DM series: DM tolerant and blank sealing modules, CSDM compression system and stayplates.



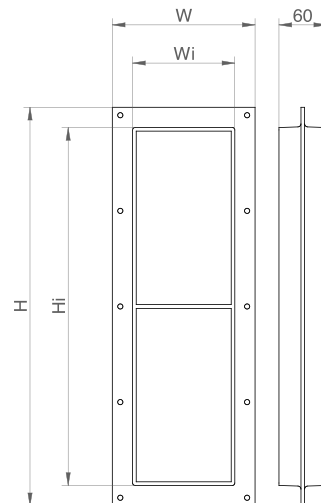
H-DM FAMILY



H-DM 4



H-DM 5



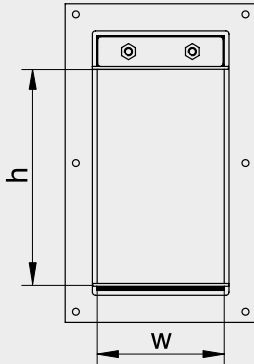
H-DM 6+6

DESCRIPTION	EXTERNAL DIMENSIONS				Weight (kg)
	W (mm)	H (mm)	Wi (mm)	Hi (mm)	
H-DM 1	120	160	69	109	0,4
H-DM 4	180	220	129	169	0,7
H-DM 5	120	278	69	227	0,7
H-DM 6.3	180	300	129	249	0,9
H-DM 6+6	180	501	129	450	1,4

*All dimensions are nominal values

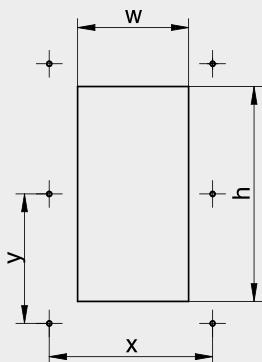
H-DM Frame

 Sealing Area



DESCRIPTION	SEALING AREA (mm)
H-DM 1	60x60
H-DM 4	120x120
H-DM 5	60x180
H-DM 6.3	120x200
H-DM 6+6	2x (120x180)

 Hole dimension



DESCRIPTION	HOLE DIMENSIONS		BOLTS POSITION		
	w (mm)	h (mm)	φ (mm)	x (mm)	y (mm)
H-DM 1	77	117	6	100	140
H-DM 4	137	177	6	160	100
H-DM 5	77	235	6	100	126
H-DM 6.3	137	257	6	160	140
H-DM 6+6	137	458	6	160	120

*All dimensions are nominal values

 Installation references

	page
See accessories	76
See installation guide	126